

dhoolera

WHY WAIT, WHEN THE FUTURE IS ALREADY UPON US?

The dawn of a new city with Excellent Connectivity,
World-Class Infrastructure & Efficient Governance is here.

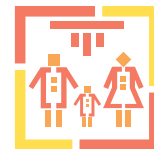
Let's usher in a new era of



BUSINESS



CONNECTIVITY



HOLISTIC LIVING



INFRASTRUCTURE



SUSTAINABILITY



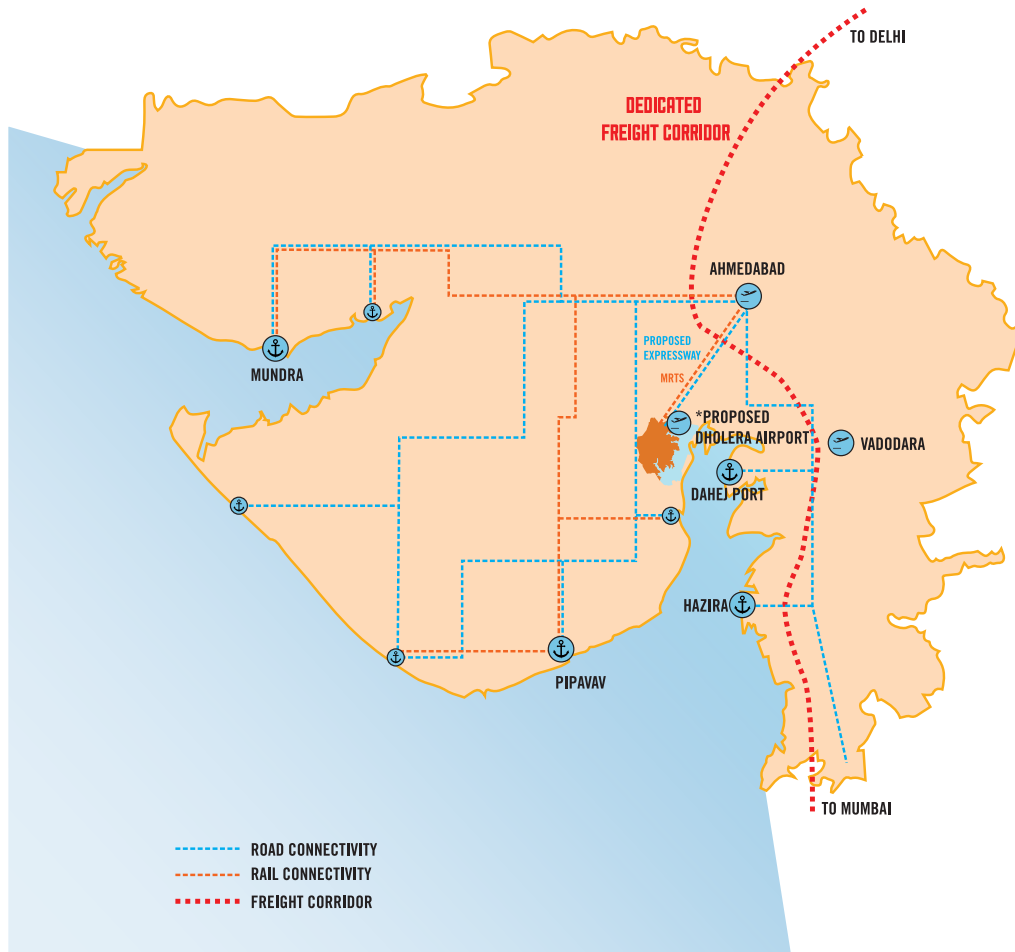
EFFICIENT GOVERNANCE

dholera[™]
— A NEW ERA —



LOCATION & CONNECTIVITY

Dholera is strategically located in Gujarat. It is the largest node on the DMIC and has excellent connectivity by air, land, rail & sea. It is just 100 km from Ahmedabad and is well connected to other major cities in Gujarat including Vadodara, Bhavnagar and Rajkot



15 MIN
PROPOSED
DHOLERA AIRPORT



02 HRS
AHMEDABAD AIRPORT



2.5 HRS
VADODARA AIRPORT



04 HRS
PIPAVAN PORT



06 HRS
MUNDRA PORT

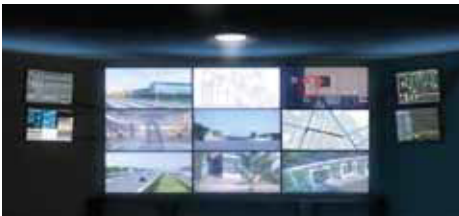


10HRS
JNPT, MUMBAI



WORLD-CLASS INFRASTRUCTURE

State-of-the-art, smart and sustainable infrastructure facilities set Dholera apart. Its world class infrastructure is benchmarked against the best practices from around the world. It is unique as it is the first city in India where all underground utilities like gas, power, potable water, recycled water, sewage pipes and storm water are pre-planned for wholesome development, with capability of handling the growing demands of the city.



PLUG & PLAY

Right from the start, the vision has been to have a 'Plug & Play' approach wherein all the land parcels are fully ICT enabled and completely built up infrastructure is offered right at plot level. This will be an underlying enabler in all spheres of the city and will integrate multiple essential disciplines, which will in turn facilitate ease of doing business and holistic living, along with a platform for efficient operations and administration.



SAFETY AND SECURITY

Dholera's Command and Control Centre has been designed to oversee safety & security, and will seamlessly merge city departments to enable collaboration for efficiency.



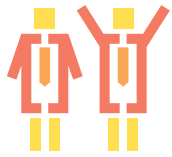
EFFICIENT TRANSIT NETWORK

Dholera's planning includes safe and well controlled roads with Multi-Purpose corridors, Bicycle Tracks, Service Roads, shaded pedestrian friendly, shaded walkways for comfort and safety, constant monitoring by CCTV cameras and a dynamic intelligent Traffic Management system.



EFFICIENT GOVERNANCE

A special purpose vehicle, Dholera Industrial City Development Limited (DICDL) has been created to enable swift and efficient governance.



LIVE WORK PLAY



Dholera Industrial City focuses on catering to the multi-dimensional needs of businesses and industries. While they will create jobs and opportunities, the social infrastructure will ensure that the employees and their families can live close to work.

A hierarchy of functional open green spaces including neighbourhood parks, community parks, linear park within walking distances along with recreation and sports zone will provide places to play and recreate – thus laying a strong foundation for a Live--Work--Play community. There are also special zones that have been allocated for Economically Weaker Section (EWS) housing



SOCIAL INFRASTRUCTURE



Dholera's design includes amenities to cater to the health, safety, educational, entertainment, cultural and spiritual needs of inhabitants, and they have been strategically located to provide safe and easy access.

From neighbourhood level farmers' market to dedicated zones for hawkers, dispensaries to emergency services with quick response time, petrol pumps to electric vehicle charging stations, taxis and auto rickshaw stands to bicycle parking, public toilets to spaces for public art and cinema halls to religious facilities. Education infrastructure ranging from early childhood education to Anganwadis to integrated schools, from colleges to skill development centers, Dholera has it all.



ABOUT DHOLERA SIR

Dholera Special Investment Region (DSIR) is a greenfield industrial city planned and located approximately 100 km South West of Ahmedabad. Dholera spans an area of approximately 920 sq km & comprises a developable area of 422 sq km (with land now ready for allotment), which will be ready by 2037. It is strategically located between the industrial cities of Ahmedabad, Vadodara, Rajkot and Bhavnagar.

Dholera's immediate city development area of approximately 5,600 acres is expected to be operational by 2019. It is envisaged to be a world-class destination with excellent infrastructure. It will have its own self sustaining eco-system, while industry will be the main economic driver.

The city will provide opportunities for the setting up of manufacturing units, while also aiming to provide an environment to work, live, learn and play. Dholera SIR will be a role model for future cities in India.

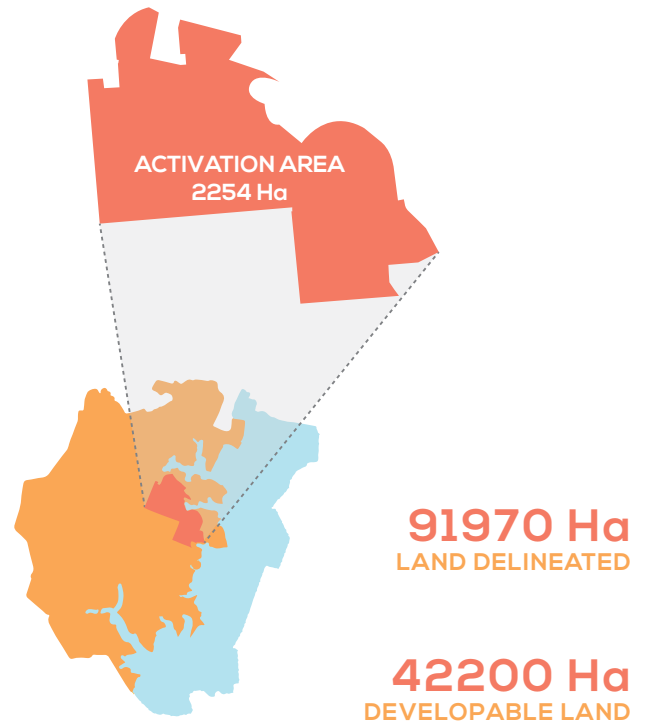
NICDC – THE VISION AND PLAN

National Industrial Corridor Development Corporation (NICDC) is India's most ambitious infrastructure program, aiming to develop National Industrial Corridor Development Corporation (NICDC) is India's most ambitious infrastructure program, aiming to develop new industrial cities as 'Smart Cities' and converging next generation technologies across infrastructure sectors. NICDC will emerge as a "Global Manufacturing and Trading Hub" over the next few years. Dholera will be the largest node on the NICDC and will most likely be the first smart city under the NICDC. It will state-of-the-art utility & logistic infrastructure, social infrastructure including education, healthcare, other public amenities and much more.

GUJARAT

Gujarat, India's westernmost state, has varied terrain and rich cultural & economic heritage. It is strategically located and is well connected to the major cities of the world, both by air and sea routes. The state has a coastline of 1,600 km with 42 ports that connect to major sea based trade routes and trade centres like Middle East, West Europe, Asia and upcoming destinations on the African Continent. The state also acts as a gateway to landlocked states of India connecting to them by road, rail and air thereby boosting their trading opportunities.

**AN AREA OF
2254 Ha IS THE
CATALYST WHICH
WILL ACTIVATE
THE RAPID SCALING
OF DHOLERA CITY**



HERITAGE

Lothal is one of the most prominent cities of the ancient Indus valley civilization, located in the Bhal region of the modern state of Gujarat and dating back to 3700 BC. It was one of the earliest trading civilizations and pioneers in foreign trade & progress, with its trade of beads, gems and valuable ornaments reaching the far corners of West Asia and Africa. They were pioneers of town planning, science and trading, had a well-developed economy, urban culture and architectural developments. Dholera, in close proximity to Lothal aims to tap into the rich mercantile heritage of Gujarat.



SUSTAINABILITY



WATER AND WASTE WATER SYSTEM

Zero waste discharge by treating 100% of the wastewater generated to tertiary standards for non-potable and industrial use. Smart metering and SCA have been implemented to minimise loss.



SOLID WASTE MANAGEMENT

Provisions are in place for 100% collection of solid waste and recycling of biodegradable solid waste to be treated for use as compost and to generate energy.



STORM WATER MANAGEMENT AND RAIN WATER HARVESTING

Systems are in place to capture and utilise storm water runoff and the rain water harvesting system is implemented through an open earthen canal, which will allow aquifer recharge and reuse of water for irrigation.

POWER MANAGEMENT

24/7 uninterrupted power supply provided. Smart grid, smart metering and monitoring has been deployed to minimise losses. Policies to generate renewable energy are in place.



EASE OF DOING BUSINESS

A single window system is in place to streamline the G2B (Government to Business) interaction, that will greatly reduce procedures and approvals required for various aspects of business.



This includes:

- Ready list of permits (as per industry type)
- Single point of contact for every business
- Permits/Approvals granted within a pre-fixed period

WHY DHOLERA



Dholera SIR is set to become one of India's most developed regions wherein all aspects of life, work and play seamlessly converge to create a world-class city. We have carefully planned and gone the extra mile to make Dholera SIR the destination of choice for you.

Located in the Prime Minister's home state of Gujarat and a part of his visionary plan, Dholera is extremely well-connected to the rest of India and the world. It will be home to non-polluting industries, as we aim to create a clean, green and sustainable urban development. It will be the perfect place to set up large manufacturing units due to the availability of large land parcels.

Dholera will be hosting clients from all over India and the globe. We have taken steps to ensure ease-of-doing-business - from single-window clearance to allotment of government land with guaranteed titles and much more.

We have rapidly progressed towards laying the platform for the city to become a hub of innovation and progress. With all this and more, Dholera is one of the best strategic locations in the world for your business to grow and flourish.

dholera

Ushering a
NEW ERA

To know more and get in touch with us:

P:079-29750500 • **F:**079-29750502 • **E:**info@dicdl.in • **W:** www.dicdl.gujarat.gov.in

A:Dholera Industrial City Development Limited, Block No.1&2,6th Floor Udhog Bhavan,
Sector- 11,Gandhinagar-382017,Gujarat

CIN No. : U45209GJ2016SGC085839

